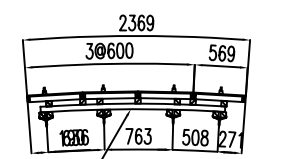
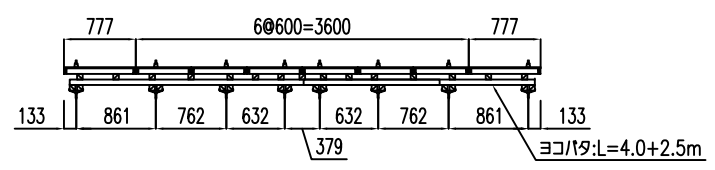


type-E



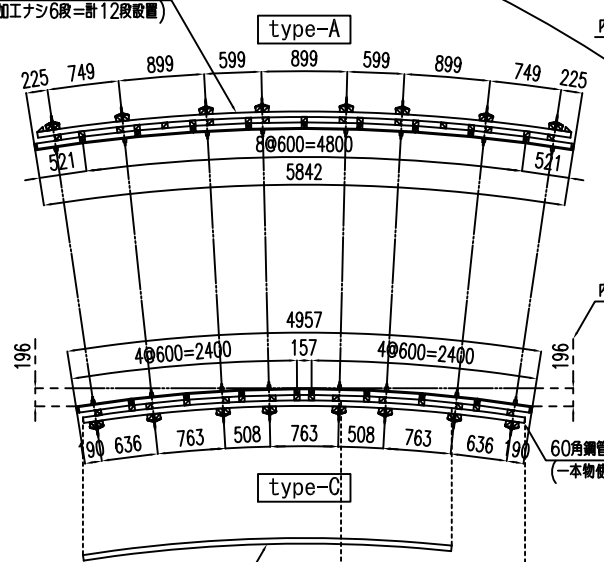
type-E'

60°角鋼管曲げ加工OR=15568/L=2000



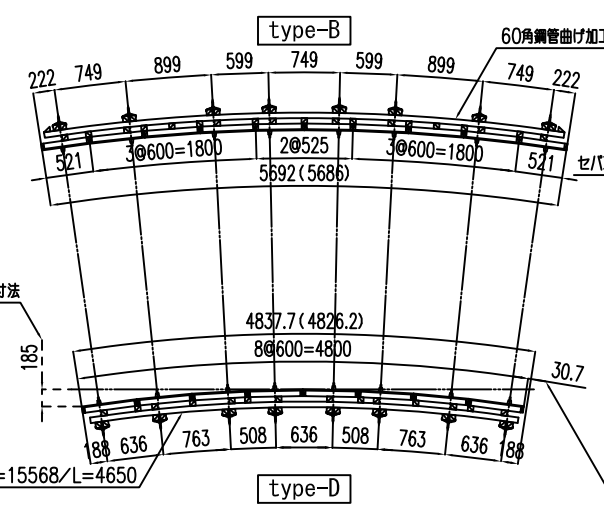
type-F

60°角鋼管曲げ加工OR=18692/L=5800
(バンド加工196段、加工ナシ6段=計12段設置)



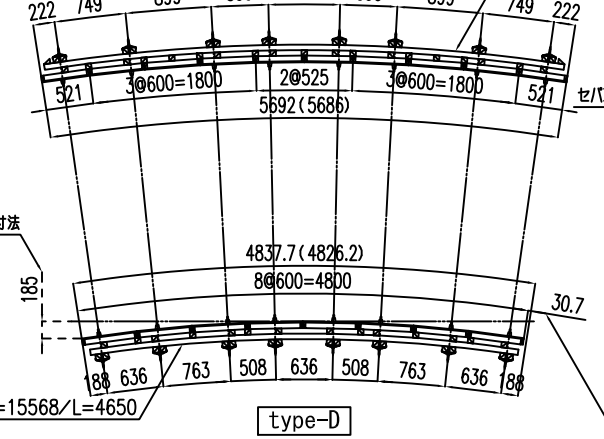
type-A

60°角鋼管曲げ加工OR=15568/L=4000/L=2000
(ラップ使用時)



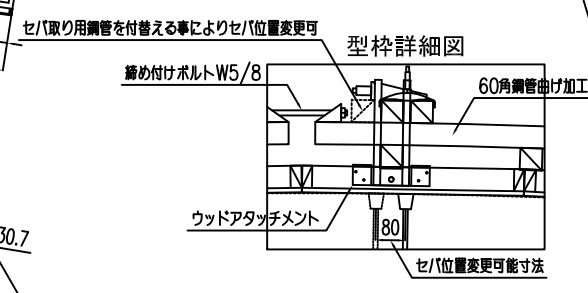
type-C

60°角鋼管曲げ加工OR=18692/L=5650



type-B

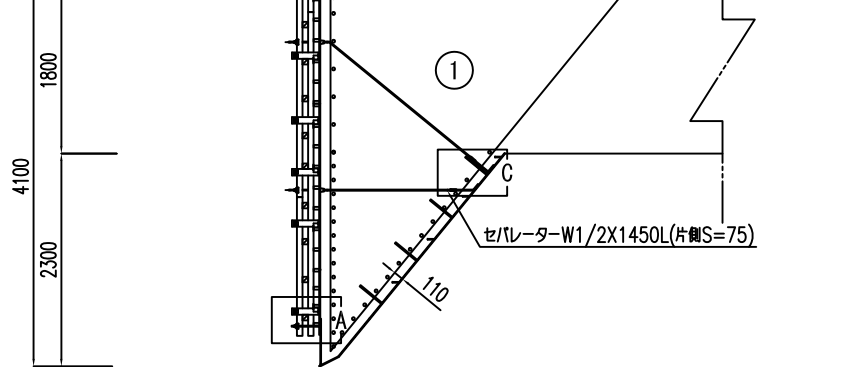
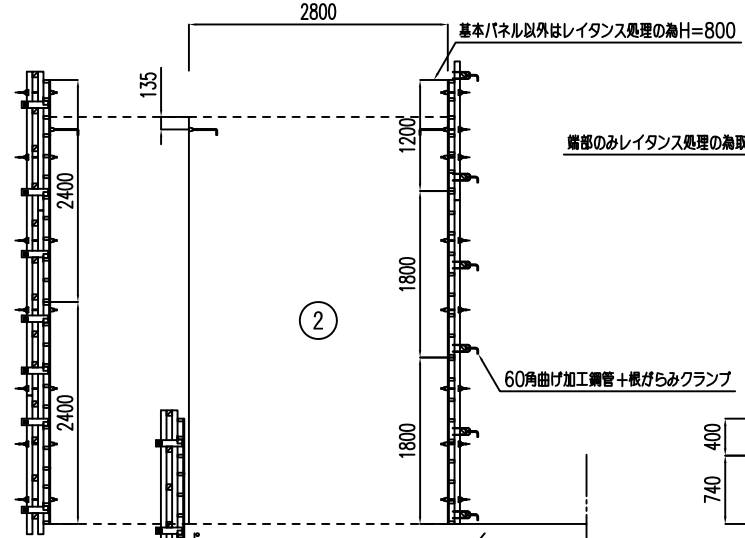
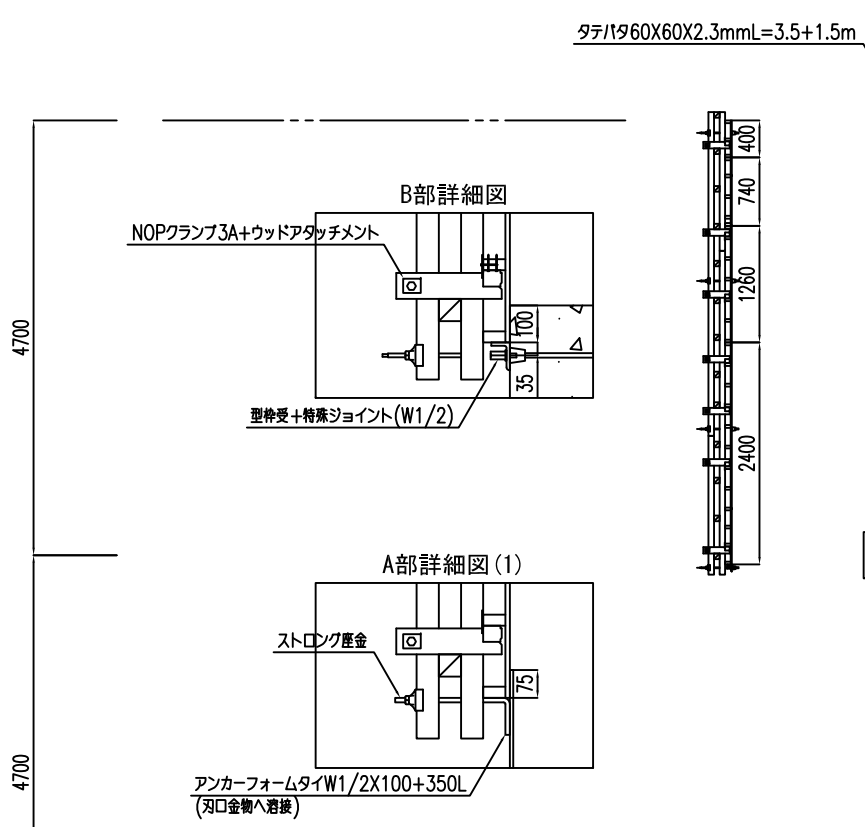
60°角鋼管曲げ加工OR=15568/L=4650



型枠詳細図

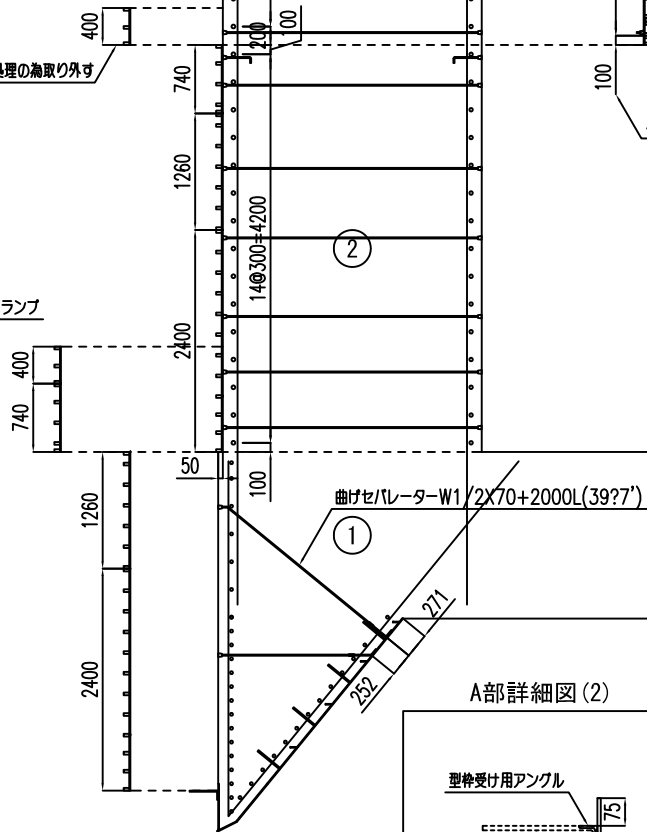
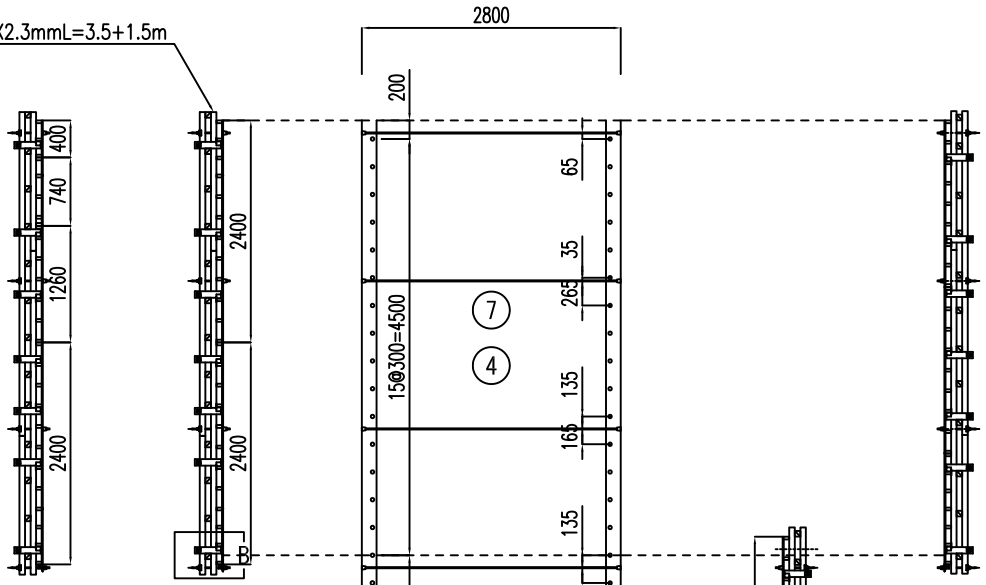
型枠及び調整位置及びバラシ枠設置位置

型枠及び調整位置及びバラシ枠設置位置



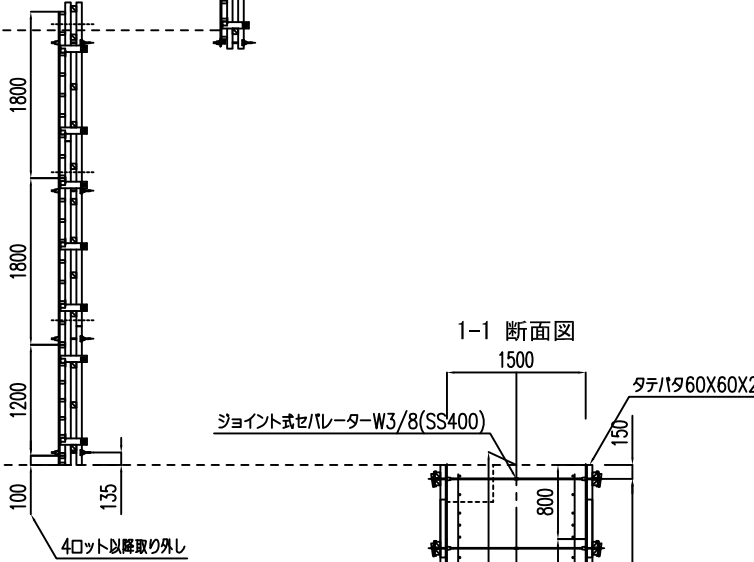
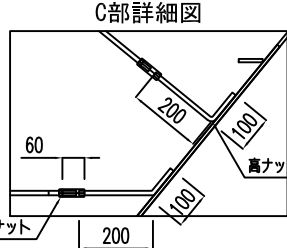
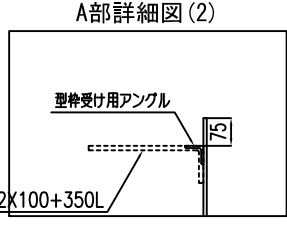
1ロット外枠上部はパイプサポート等にて補強

タテハタ60X60X2.3mmL=3.5+1.5m

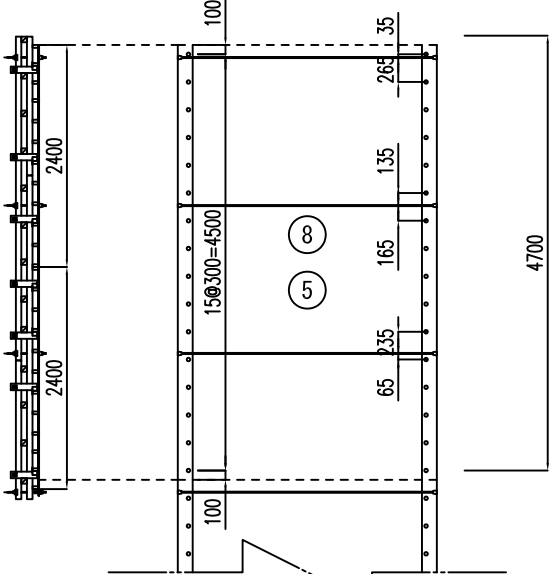
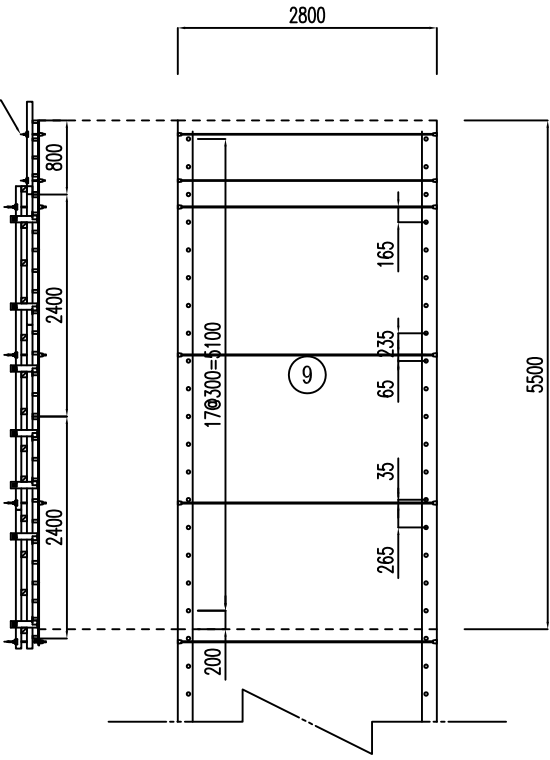


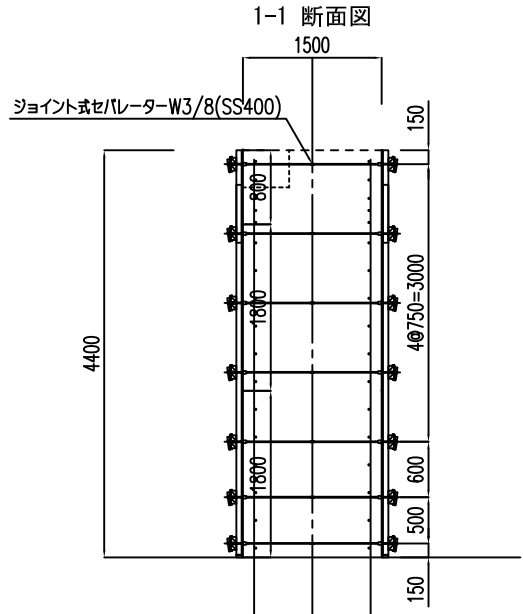
アンカーフォームタイW1/2X100+350L (対口金物へ溶接)

ゆるみ止めナット

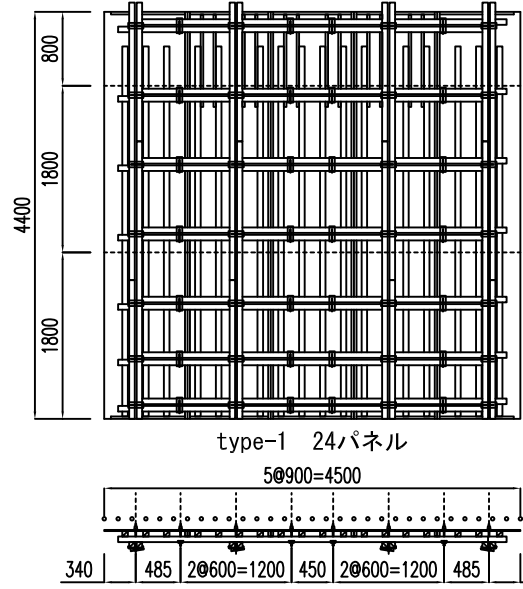


最終天井のみW3/8セパレーター設置





X 通り側型枠展開図

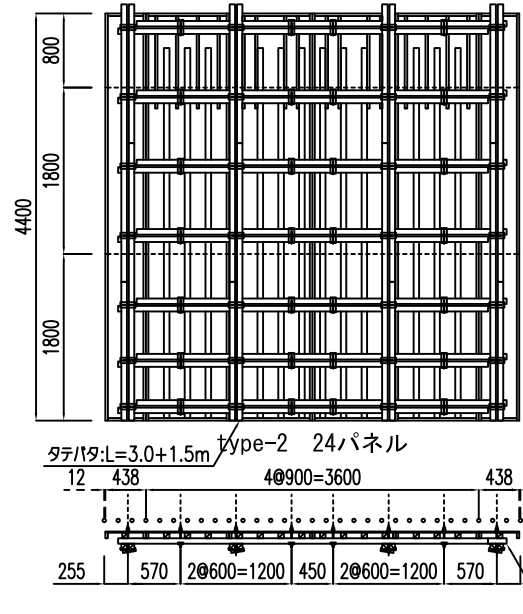


type-1 24パネル

50900=4500

340 485 20600=1200 450 20600=1200 485 340

Y 通り側型枠展開図

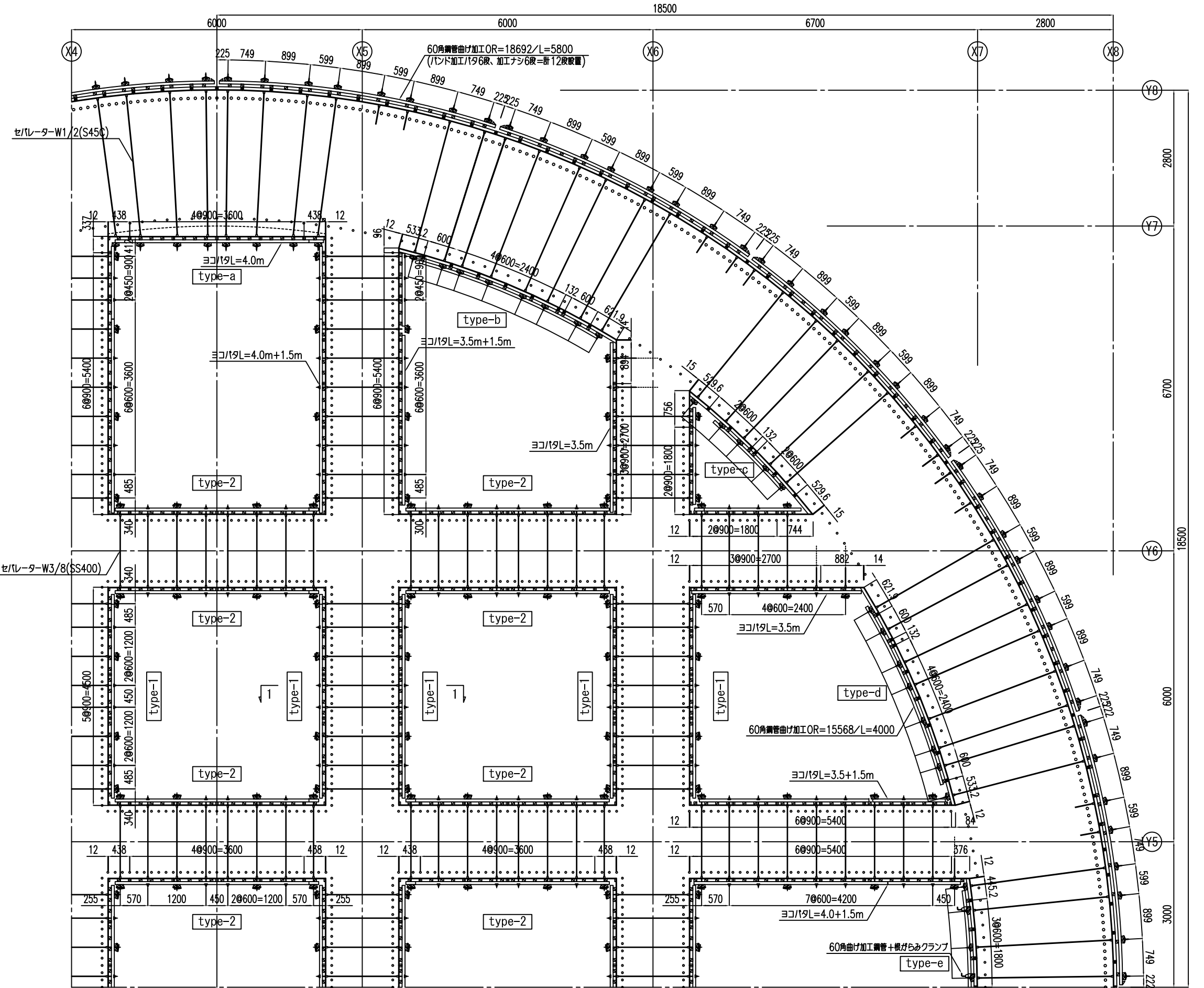


type-2 24パネル

24719=L=3.0+1.5m 40900=3600

255 570 20600=1200 450 20600=1200 570 255

30719=L=4.0m



内枠R側はパイプサポート等にて補強